

## Nitto-Chucks and Center Pad for Sale.

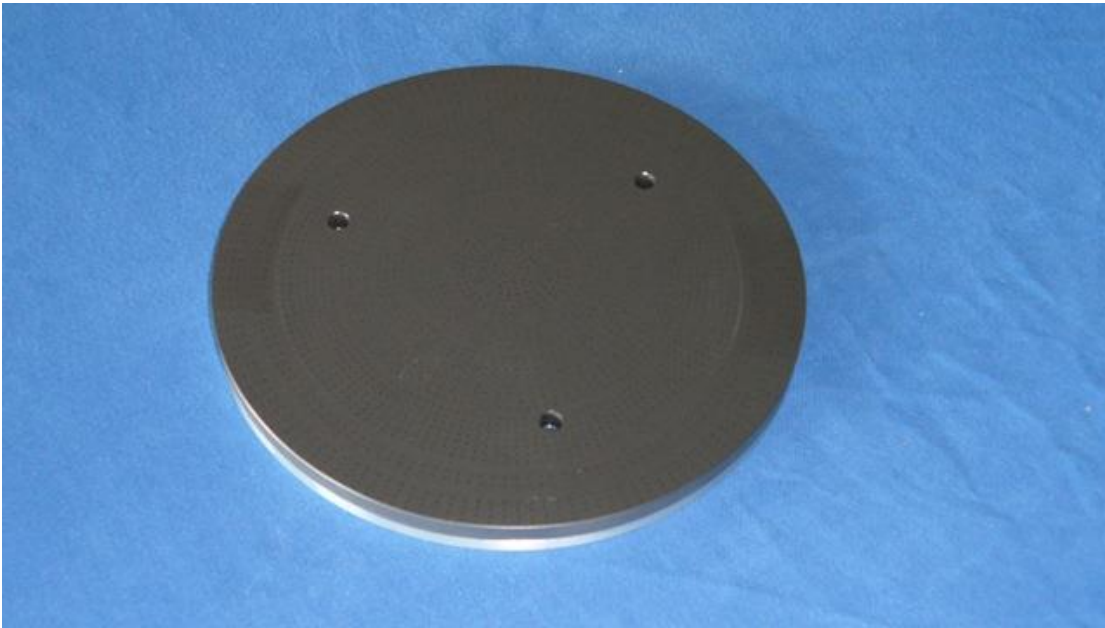


P/N: 1158600000, Used Chuck Table for Taiko, 10:30 o'clock (for 6" flat)  
Nitto Chuck for HR8500II / III Taiko (flat for 6" inner vacuum ring at 10:30h  
position)

diameter: 190mm

Teflon plated

- outer vacuum ring (8" Taiko) not included
- slight cosmetical surface quality deviation



Please contact [daniel.grau@teltec.com](mailto:daniel.grau@teltec.com) to request quote. Page 1 of 4

## Nitto-Chucks and Center Pad for Sale.



P/N: CHUCK TABLE-1

### Description:

Nitto Chuck table for HR8500II / III, 10:00 o'clock

- Thin wafer option
- 8", 7" vacuum line has no OF (primary flat),
- smaller wafer diameter vacuum lines have OF lines at 10:00 o'clock
- Teflon coated

As new, cosmetic discoloration

P/N "CENTER PAD-1 fits together with it



Please contact [daniel.grau@teltec.com](mailto:daniel.grau@teltec.com) to request quote. Page 2 of 4

# Nitto-Chucks and Center Pad for Sale.

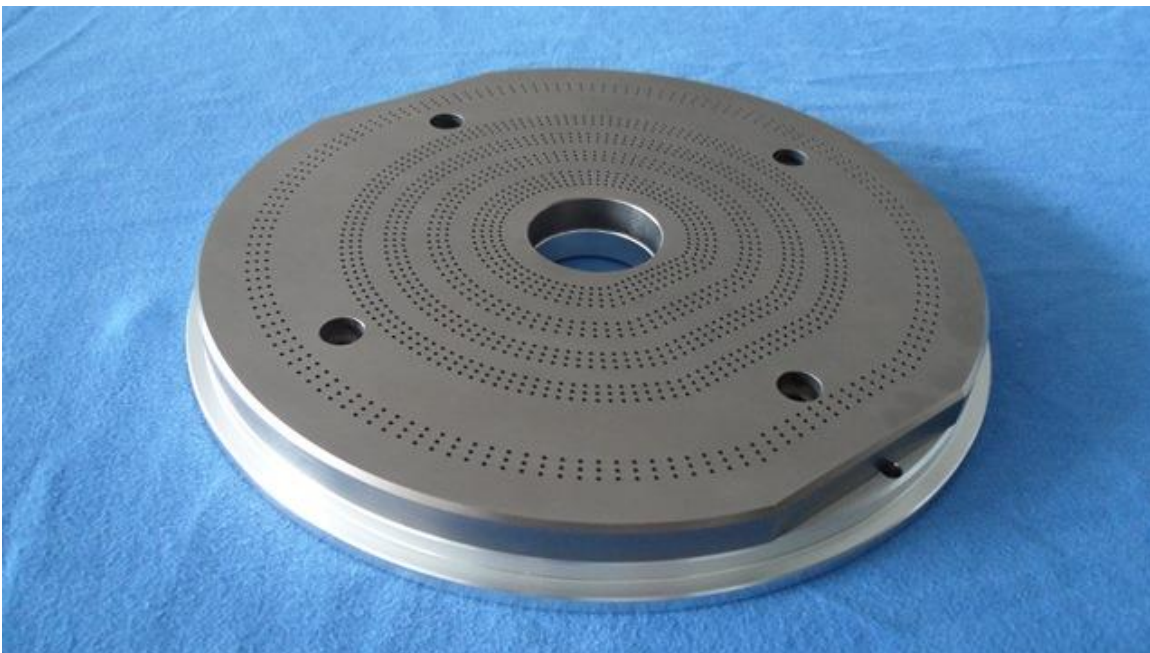
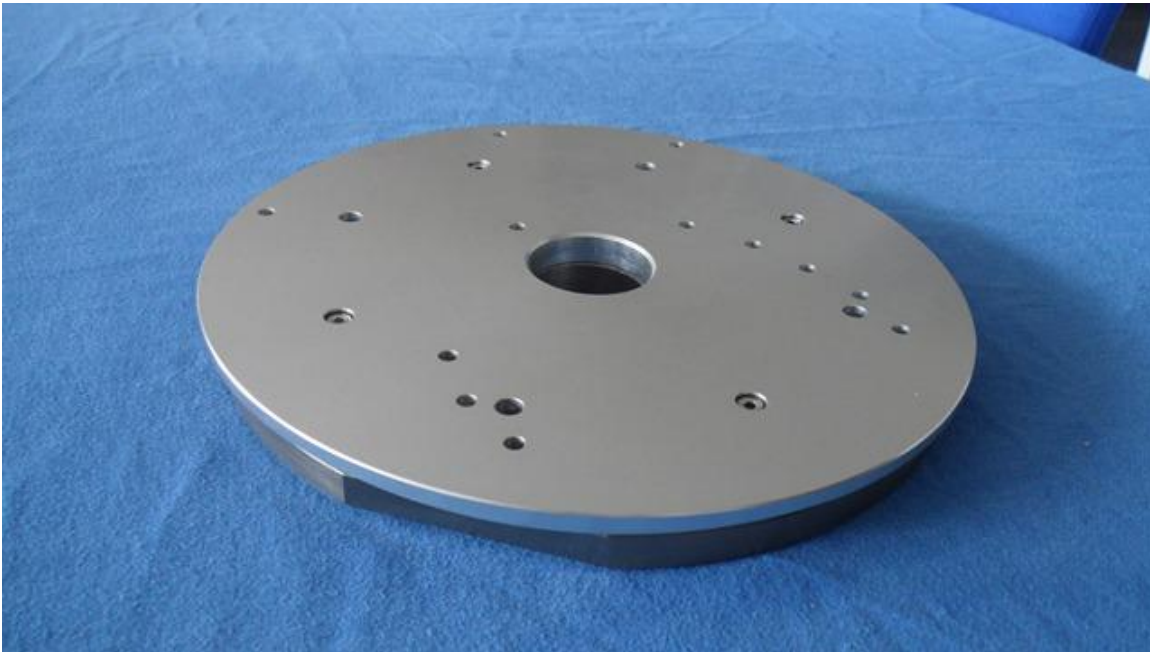


P/N: CHUCK TABLE-2

## Description:

Nitto Chuck table for HR8500II / III

- new design chuck table
- 8" and below wafer diameter vacuum lines have OF lines at 10:30 o'clock
- Teflon plated



Please contact [daniel.grau@teltec.com](mailto:daniel.grau@teltec.com) to request quote. Page 3 of 4

## Nitto-Chucks and Center Pad for Sale.



P/N: CENTER PAD-1

Description:  
Center pad for chuck, HR8500  
Teflon coated

As new  
Chuck P/N "CHUCK TABLE-1" fits together with it.



Please contact [daniel.grau@teltec.com](mailto:daniel.grau@teltec.com) to request quote. Page 4 of 4